

D-Link®

5GHz

2.4GHz

Choose the band that works best for you

DUAL BAND N



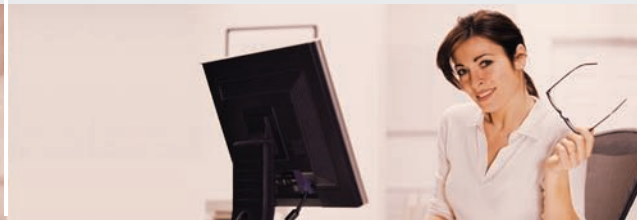
XTREME N®

DUAL BAND USB ADAPTER

Wirelessly stream HD video, share files, & go online

Optimized for HD video streaming

Push Button to easily connect to a secure network



The D-Link® Xtreme N® Dual Band USB Adapter (DWA-160) is the latest addition to the award-winning Xtreme N product family. The DWA-160 is designed for users looking to get a reliable wireless connection that can handle High-Definition (HD) video streams throughout the house. This is achieved by using the DWA-160 together with an 11n dual band router (D-Link DIR-855 or DIR-825 recommended).

BENEFITS OF DUAL BAND

The dual band N technology in the DWA-160 supports selectable 2.4GHz or 5GHz wireless signals. This allows you to check e-mail and browse the Internet using the 2.4GHz band or stream HD movies and other media on the 5GHz band. The 5GHz wireless band is the best technology available for wirelessly streaming HD videos across your network. It achieves this by operating in a clear wireless band to help avoid interference that may slow down and limit the range of current wireless technologies like 802.11g. The DWA-160 is also backward compatible to 802.11g, which means it can be used in existing 802.11g networks.

EASY TO SET UP, EASY TO USE

The D-Link Quick Adapter Setup Wizard guides you step-by-step through the installation process. Configure this USB adapter without having to call a networking expert to help you. The DWA-160 features a Wi-Fi Protected Setup™ (WPS) Push Button for easy connection to a wireless network. The D-Link Wireless Manager is also included with this product to keep track of your most frequently accessed networks so that you can join them quickly and easily.

With unmatched wireless performance, reception, and security, the D-Link Xtreme N Dual Band USB Adapter (DWA-160) is the best choice for easily adding or upgrading wireless connectivity to your PC.

WIRELESS

N

DWA-160

XTREME N™ DUAL BAND ADAPTER BENEFITS

- + Delivers up to 14x faster speeds² and 6x farther range² than 802.11g
- + Xtreme N® technology enables High-Definition (HD) video streaming, file sharing, enhanced Internet phone calling (VoIP), and Web surfing
- + Access a secure wireless network using advanced WPA™ or WPA2™ encryption
- + Easy to install and use with the D-Link Quick Adapter Setup Wizard or using Wi-Fi® Protected Setup (WPS) push button¹
- + Backward compatible with 802.11g devices including game consoles and digital media players

WHAT IS DUAL BAND N?

Dual band N is the latest addition to the award-winning Xtreme N product family. The dual band technology in the DWA-160 supports 2.4GHz or 5GHz wireless signals. This allows you to check E-mail and browse the Internet using the 2.4GHz band or stream HD movies and other media on the 5GHz band. The 5GHz band helps avoid interference by providing a clearer wireless band for HD file streaming.

RECOMMENDED SYSTEM REQUIREMENTS

For Optimal Wireless Performance, use with:

- Xtreme N Duo Media Router (DIR-855)
- Xtreme N Dual Band Gigabit Router (DIR-825)
- Xtreme N Gaming Router (DGL-4500)

MINIMUM SYSTEM REQUIREMENTS

- + Computer with:
 - Windows Vista® (32 & 64-bit) or Windows® XP SP3⁵
 - CD-ROM Drive
 - 20MB Hard Disk Space
 - USB Port³
- + For Internet Access
 - Cable or DSL Modem
 - Wireless Router
 - Subscription with an Internet Service Provider (ISP)

PACKAGE CONTENTS

- + Xtreme N® Dual Band USB Adapter
- + USB Extension Cradle
- + Quick Installation Guide
- + CD-ROM⁶ with
 - Installation Wizard
 - Product Documentation

TECHNICAL SPECIFICATIONS

STANDARDS

- + IEEE 802.11n
- + IEEE 802.11g
- + IEEE 802.11a

INTERFACE

USB 2.0³

SECURITY

- + Wi-Fi Protected Access (WPA & WPA2)⁴
- + Wi-Fi Protected Setup™ (WPS)
 - Push Button

LED

+ Link/Activity

CERTIFICATIONS

- + FCC Class B
- + IC
- + Wi-Fi®

OPERATING TEMPERATURE

32° to 104°F (0° to 40°C)

OPERATING HUMIDITY

10 ~ 90% (Non-condensing)

DIMENSIONS

- + Item (WxDxH): 1.5" x 3.5" x 0.5"
(38.1mm x 88.9mm x 12.7mm)
- + Packaging (WxDxH): 8.1" x 1.4" x 5.4"
(205.7mm x 35.6mm x 137.2mm)

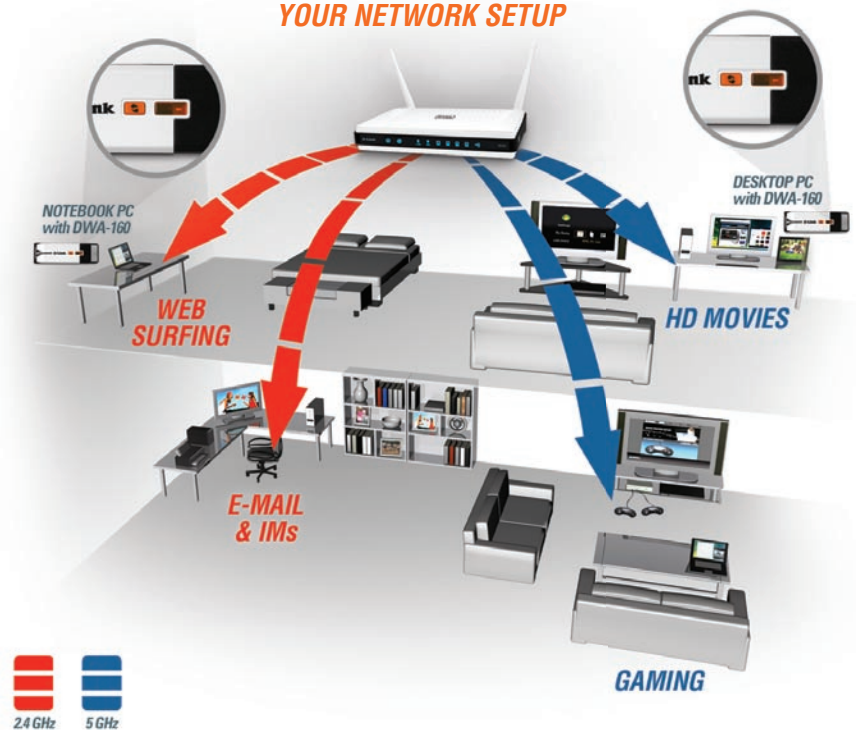
WEIGHT

- + Item: 0.1lbs (0.05kg)
- + Packaging: 0.5lbs (0.23 kg)

WARRANTY

1-Year Limited⁴

YOUR NETWORK SETUP



¹ Wi-Fi Protected Setup (WPS) push button available on hardware version A2.

² Maximum wireless signal rate derived from IEEE Standard 802.11g, 802.11a, and 802.11n specifications. Actual data throughput will vary. Network conditions and environmental factors, including volume of network traffic, building materials and construction, and network overhead, lower actual data throughput rate. Environmental factors will adversely affect wireless signal range. Wireless range and speed rates are D-Link RELATIVE performance measurements based on the wireless range and speed rates of a standard Wireless G product from D-Link. Maximum throughput based on D-Link 802.11n devices.

³ Using a USB 1.1 port will affect device performance. USB 2.0 port recommended.

⁴ 1-Year Limited Warranty available only in the USA and Canada.

⁵ Computer must adhere to Microsoft's recommended System Requirements.

⁶ Latest software and documentation are available at <http://support.dlink.com>.